



SIGNATUREGLOBAL DEVELOPERS PRIVATE LIMITED | CIN NO. : U70109DL2012PTC241901

REGD. OFFICE: 13TH FLOOR, 28 BARAKHAMBA, ROAD, CONNAUGHT PLACE, NEW DELHI - 110001

CORP. OFFICE: GROUND FLOOR, TOWER-A, SIGNATURE TOWER, SOUTH CITY-1, GURUGRAM, HARYANA- 122001

[www.signatureglobal.in](http://www.signatureglobal.in)

**Disclaimer:**

Promoter urges every applicant to inspect the project site and, therefore, requests to make personal judgment prior to submitting an application for allotment. Unless otherwise stated, all the images, visuals, materials and information contained herein are purely creative/artistic and may not be actual representations of the product and/or any amenities. Further, the actual design may vary in the fit and finished form, from the one displayed above. Journey time shown, if any, is based upon Google Maps which may vary as per the traffic at a relevant point of time. The dimensions specified, if any, are inclusive of wall-to-wall measurements, excluding finishing margins. Potential offsets within rooms may occur due to structural elements. \*Rate mentioned above, if any, does not include GST and other statutory charges as applicable. T & C Apply. 1 sq. mt. = 10.7639 sq. ft.

FOR ANY QUERY PLEASE SPEAK TO OUR CUSTOMER RELATIONSHIP MANAGER

RERA REGISTRATION NO. :

(WWW.HARYANARERA.GOV.IN)

SIGNATUREGLOBAL DEVELOPERS PRIVATE LIMITED

# ASCEND TO THE **SIGNATURE** LIFE



 **SIGNATURE  
GLOBAL**  **CITY 37D-1A**  
SECTOR 37D, GURUGRAM

# SIGNATURE GLOBAL CITY 37D-1A

## SECTOR 37D, GURUGRAM

Rediscover a good lifestyle of happiness; enjoy a well-connected life with proximity to major highways. Signature Global City 37D-1A is designed with a neo classical façade architectural theme to provide you with an upscale, urban ambience. Also, Vastu compliant prayer rooms help to harness the positive energy; creating an ambience of domestic bliss.

What's more, the project comes with a club for all the residents of the society with state-of-the-art interior, games and gym for a healthy life. To make your life comfortable and hassle-free here, world class amenities are provided along with high-end security and a private service area for your visitors.



### LOCATION ADVANTAGE

- Proximity to key employment hubs of the city like Cyber City, Golf Course, Sohna, Manesar, etc.
- Major industrial employment centre of Manesar is in close proximity.
- Sector 37D has good social infrastructure in the neighbourhood.
- Residential projects in these places are ideal for those who choose to surround themselves by abundant greenery with the soothing sound of nature.
- Schools, Hospitals, Shopping Malls, Retail Markets and Five Star Hotels are in close proximity.
- The city has a great connectivity with the international airport via Dwarka Expressway.

**GREAT FEATURES  
AROUND THE PROJECT**



ENJOY AN  
URBAN LIFESTYLE,  
IN THE LAP OF NATURE.



BIG ON SPACE,  
FOR FUN AND GAMES.



TAKE A  
DIP IN LUXURY.



CONNECT WITH LIFE.  
LIVE IN THE LAP OF LUXURY.



WALK UP  
THE PATH TO  
AN UPGRADE LIFE.



CONNECT WITH  
BESPOKE ENTERTAINMENT.



LET YOUR  
OPULENCE BE  
THE TALK OF THE TOWN.



BANG ON  
DWARKA EXPRESSWAY.

# AMENITIES



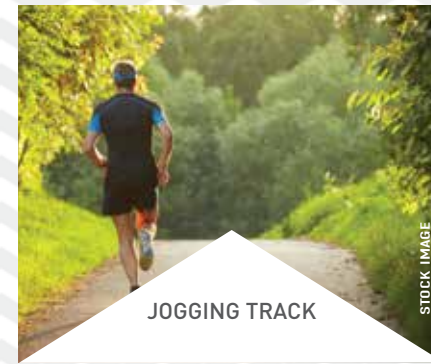
DEDICATED LIFTS  
FOR STILT+ 4 FLOORS



DEDICATED  
CAR PARKING



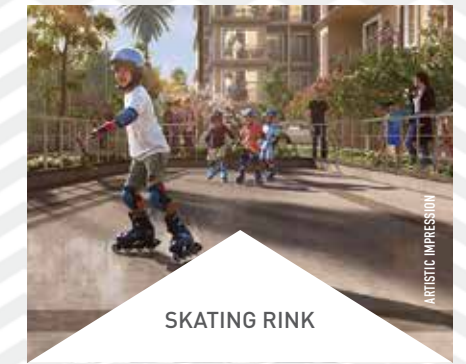
OUTDOOR GYM



JOGGING TRACK



OPEN-AIR  
AMPHITHEATRE



SKATING RINK



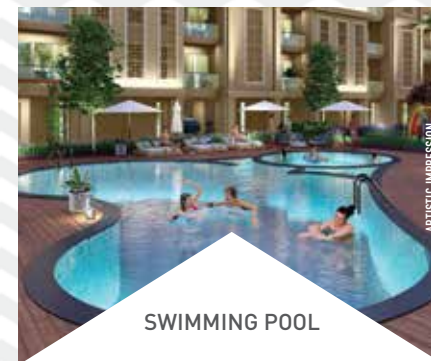
BUTTERFLY  
GARDEN



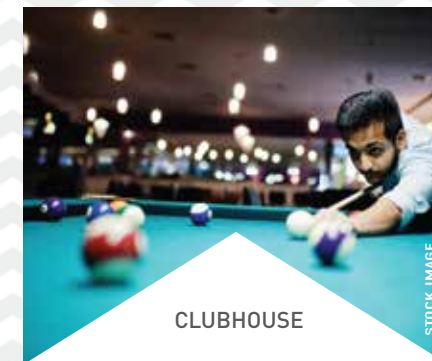
MULTIPURPOSE  
LAWN



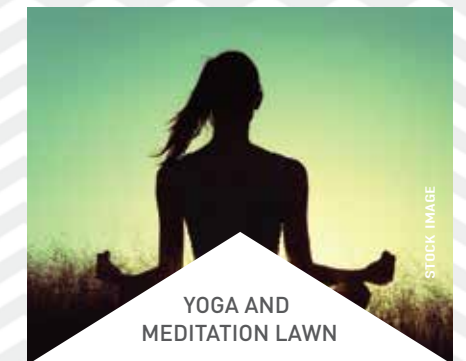
BADMINTON  
COURT



SWIMMING POOL



CLUBHOUSE



YOGA AND  
MEDITATION LAWN



HALF  
BASKETBALL COURT



TODDLERS'  
PLAY AREA



PET'S AREA



FLOWER  
GARDEN



# SPECIAL FEATURES



MODULAR KITCHEN



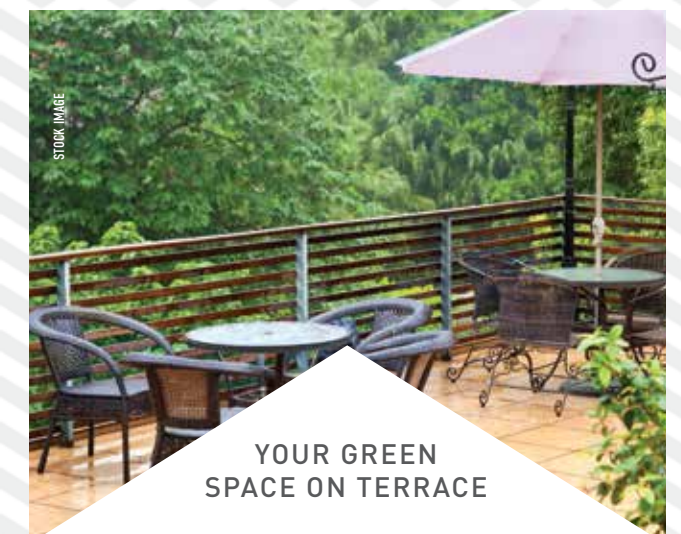
AIR-CONDITIONED  
HOME OFFICE WITH  
WAITING LOBBY



FULLY  
AIR-CONDITIONED  
PREMIUM FLOOR



PRIVATE  
SERVICE AREA



YOUR GREEN  
SPACE ON TERRACE



1. Event Lawn
2. Butterfly Garden
3. Yoga/Meditation Lawn
4. Entry Avenue
5. Club
6. Commercial
7. Adult's Swimming Pool
8. Kid's Pool
9. Jacuzzi
10. Pool Deck with Cabanna
11. Landscape Area
12. OCF

A-50A

**LEGEND OF BLOCKS**

- BLOCK - ROSE
- BLOCK - LOTUS
- BLOCK - JASMINE
- BLOCK - ZINNIA
- BLOCK - TULIP

Sizes and dimensions are approximate, actuals may vary.

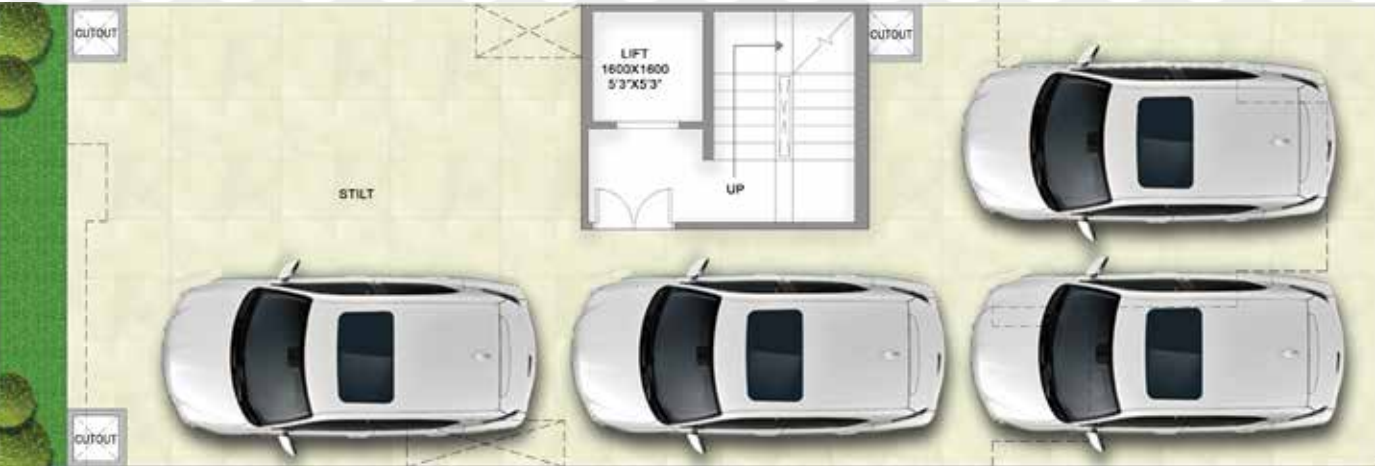


# BLOCK NUMBERING PLAN

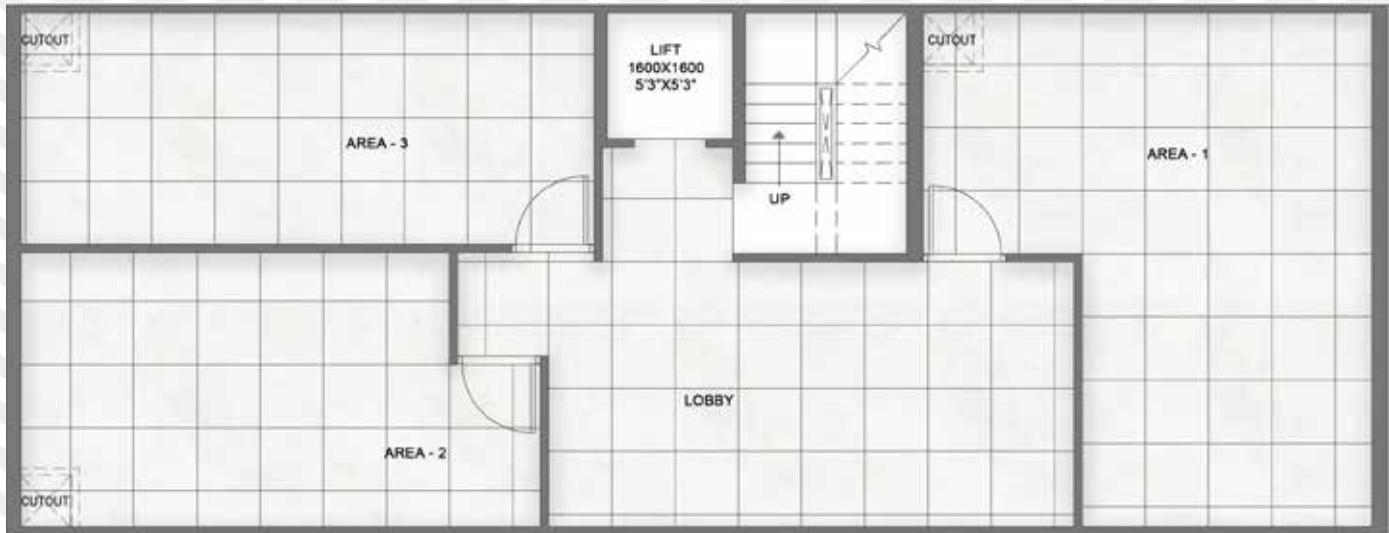
S. No.	BLOCK TYPE	PLOT TYPE	PLOT NUMBERS
1	ZINNIA	B	B132
2	ZINNIA	B	B133
3	ZINNIA	B	B134
4	ZINNIA	B	B135
5	ZINNIA	B	B136
6	ZINNIA	B	B137
7	ZINNIA	B	B138
8	ZINNIA	B	B139
9	ZINNIA	B	B140
10	ZINNIA	B	B141
11	ZINNIA	B	B142
12	ZINNIA	B	B143
13	ZINNIA	B	B144
14	ZINNIA	B	B145
15	LOTUS	C	C1
16	LOTUS	C	C2
17	ZINNIA	M	M9



# STILT FLOOR PLAN



# BASEMENT PLAN



# TERRACE PLAN



# UNIT PLAN



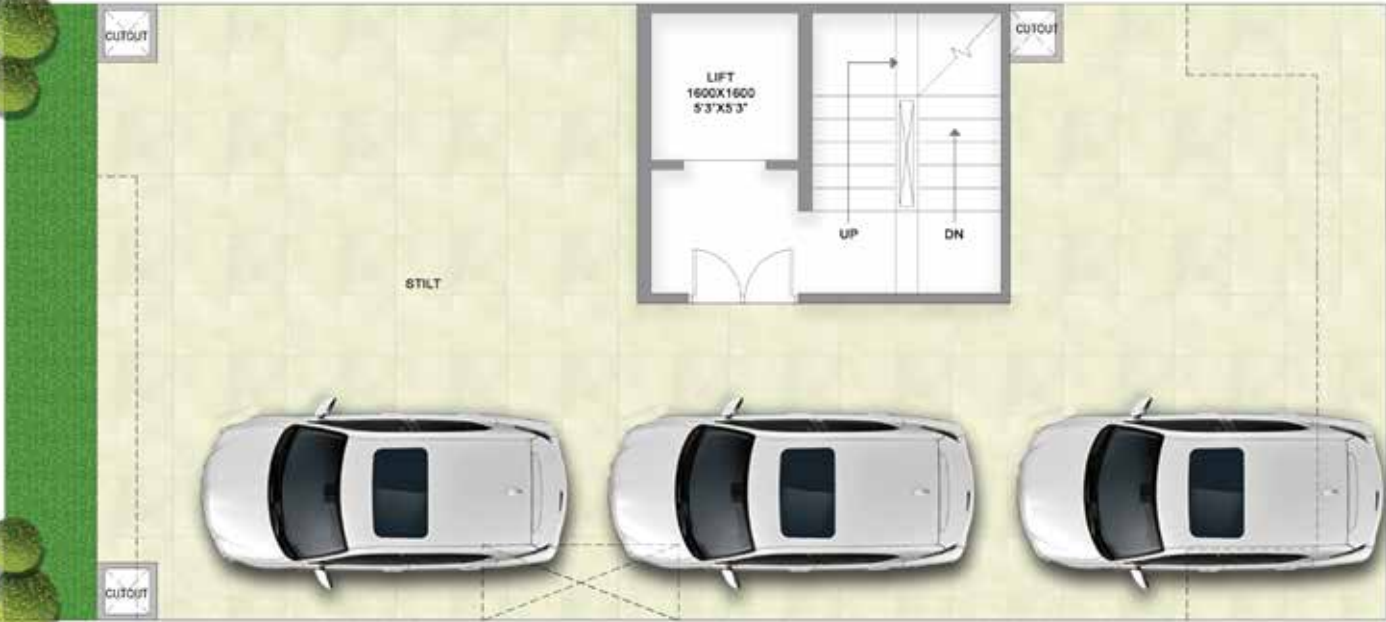
TYPE-B  
3BHK + 3 TOILET

PLOT NOS.: 132 TO 145

Unit Plan, as the situation and circumstances so warrant, shall be read in conjunction with (i) License No. \_\_\_\_\_ of \_\_\_\_\_ dated \_\_\_\_\_, and (ii) approved building plans by DTCP vide Memo. No. \_\_\_\_\_ dated \_\_\_\_\_ (including any future revisions thereof). It should be noted that the information contained herein may have certain technical inaccuracies or typographical errors, and while the Promoter Company does not doubt the Unit Plan's accuracy, no guarantee or warranty or representation as to its accuracy and completeness is being made by the Promoter Company. Unit Plan(s) is/are intended to give a specific view of the layout only. Minor inaccuracies in square footage and inaccuracies in layout and room dimensions as shown on any Plan will not excuse the Allottee from completing the purchase of the Unit without abatement in price and/ or recourse against the Promoter Company. Further, Site plans, landscaping, dimensions and Specification(s) are not deemed or intended to form part of any contract or warranty unless specifically incorporated in writing into the contract and signed by the parties to it."

For the purpose of this Project, 1 Hect. = 2.471 Acres, 1 Acre = 4840 sq.yds. or 4046.864 sq. mtrs., 1 sq.mtr. = 10.764 sq.ft.

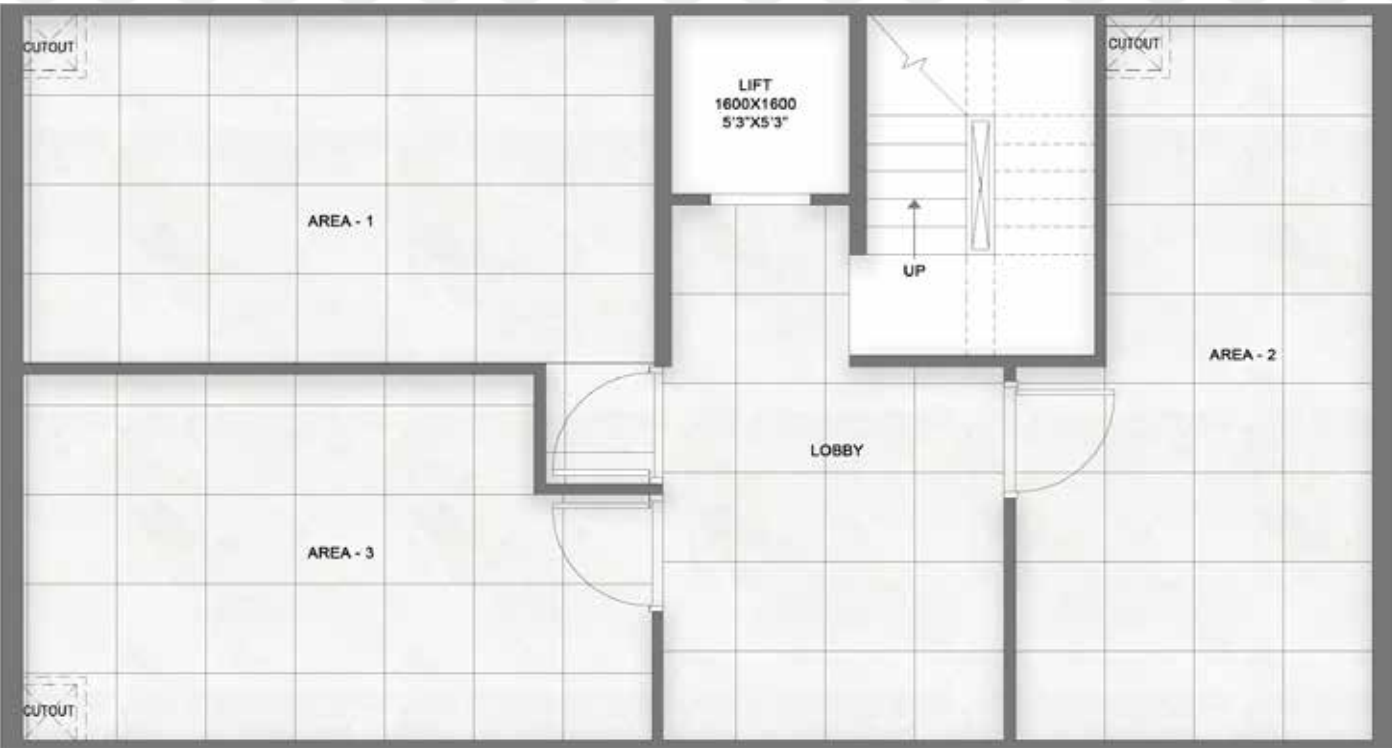
STILT FLOOR PLAN



TERRACE PLAN



BASEMENT PLAN



UNIT PLAN

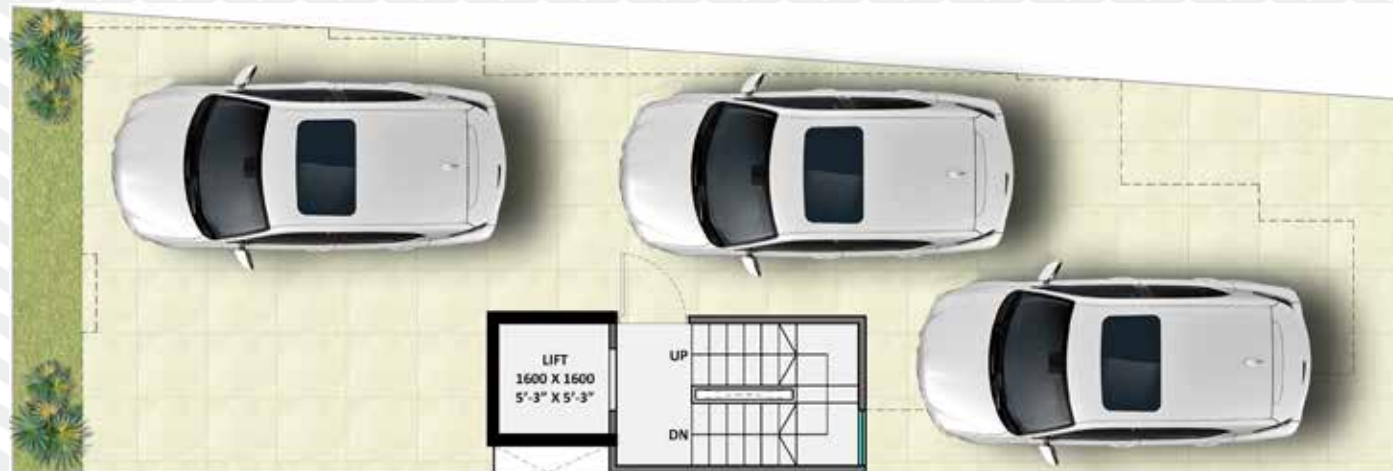


TYPE-C  
2 BHK + 2 TOILET  
PLOT NOS.: 1 TO 2

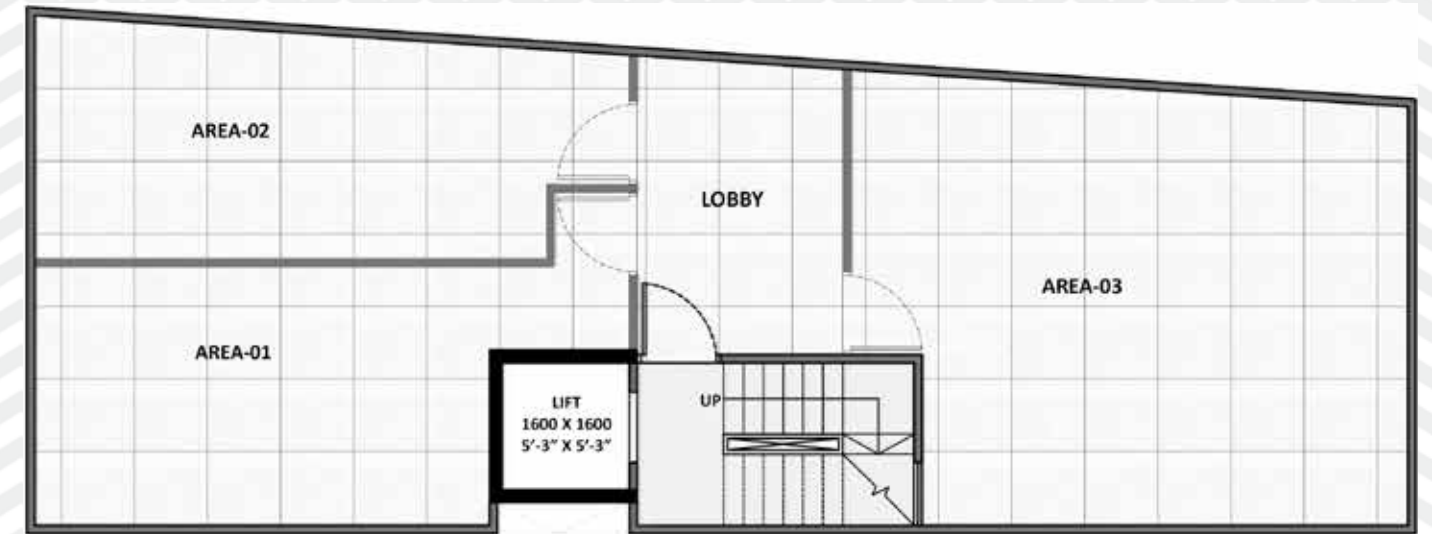
Unit Plan, as the situation and circumstances so warrant, shall be read in conjunction with (i) License No. \_\_\_\_\_ of \_\_\_\_\_ dated \_\_\_\_\_, and (ii) approved building plans by DTCP vide Memo. No. \_\_\_\_\_ dated \_\_\_\_\_ (including any future revisions thereof). It should be noted that the information contained herein may have certain technical inaccuracies or typographical errors, and while the Promoter Company does not doubt the Unit Plan's accuracy, no guarantee or warranty or representation as to its accuracy and completeness is being made by the Promoter Company. Unit Plan(s) is/ are intended to give a specific view of the layout only. Minor inaccuracies in square footage and inaccuracies in layout and room dimensions as shown on any Plan will not excuse the Allottee from completing the purchase of the Unit without abatement in price and/ or recourse against the Promoter Company. Further, Site plans, landscaping, dimensions and Specification(s) are not deemed or intended to form part of any contract or warranty unless specifically incorporated in writing into the contract and signed by the parties to it." For the purpose of this Project, 1 Hect. = 2.471 Acres, 1 Acre = 4840 sq.yds. or 4046.864 sq. mtrs., 1 sq.mtr. = 10.764 sq.ft.



## STILT FLOOR PLAN



## BASEMENT PLAN



## TERRACE PLAN



## UNIT PLAN



**TYPE-M9**  
**3 BHK + 2 TOILET**

Unit Plan, as the situation and circumstances so warrant, shall be read in conjunction with (i) License No. \_\_\_\_\_ of \_\_\_\_\_ dated \_\_\_\_\_, and (ii) approved building plans by DTCP vide Memo. No. \_\_\_\_\_ dated \_\_\_\_\_ (including any future revisions thereof). It should be noted that the information contained herein may have certain technical inaccuracies or typographical errors, and while the Promoter Company does not doubt the Unit Plan's accuracy, no guarantee or warranty or representation as to its accuracy and completeness is being made by the Promoter Company. Unit Plan(s) is/ are intended to give a specific view of the layout only. Minor inaccuracies in square footage and inaccuracies in layout and room dimensions as shown on any Plan will not excuse the Allottee from completing the purchase of the Unit without abatement in price and/ or recourse against the Promoter Company. Further, Site plans, landscaping, dimensions and Specification(s) are not deemed or intended to form part of any contract or warranty unless specifically incorporated in writing into the contract and signed by the parties to it."

For the purpose of this Project, 1 Hect. = 2.471 Acres, 1 Acre = 4840 sq.yds. or 4046.864 sq. mtrs., 1 sq.mtr. = 10.764 sq.ft.

# SPECIFICATIONS

## DRAWING / DINING ROOM



FLOOR  
VITRIFIED TILES



CEILNG  
OIL BOUND DISTEMPER



WALL  
ACRYLIC EMULSION

## BEDROOM



FLOOR  
VITRIFIED TILES



CEILNG  
OIL BOUND DISTEMPER



WALL  
ACRYLIC EMULSION

## KITCHEN



FLOOR  
VITRIFIED /  
CERAMIC TILES



WALL / CEILING  
OIL BOUND DISTEMPER



DADO  
CERAMIC TILES 600 MM  
ABOVE THE COUNTER

## BALCONIES



FLOOR  
ANTI-SKID / MATT  
FINISH CERAMIC TILES



RAILING  
GLASS RAILING

## TERRACE



BRICKBAT COBA OR  
WATER PROOFING TREATMENT

## TOILET & BATH



FLOOR  
ANTI-SKID  
CERAMIC TILES



WALL  
CERAMIC TILES TILL  
4FEET / 7'-0" FEET



CEILING  
GRID FALSE CEILING



FITTINGS & FIXTURES ISI MARKED  
CP FITTINGS, WC & WASHBASIN

## DOORS & WINDOWS



MAIN / INTERNAL  
DOOR FRAME  
HARD WOOD /  
RED MERANTI



INTERNAL DOOR  
SHUTTERS  
BOTH SIDE LAMINATED  
DOORS



EXTERNAL DOORS &  
WINDOWS  
UPVC/ALUMINIUM  
POWDER COATED

## EXTERNAL DEVELOPMENT



INTERNAL ROADS  
INTERLOCKING BLOCKS/  
TREMIX CONCRETE ROAD



BOUNDARY WALL  
RCC / BRICK WALL  
WITH PLASTER &  
EXTERNAL WEATHER  
PROOF PAINT FINISH



EXTERNAL PAINT  
WEATHER PROOF TEXTURE  
PAINT IN BUILDINGS

## ELECTRICAL



WIRING  
COPPER ELECTRICAL  
WIRING THROUGHOUT  
IN CONCEALED CONDUIT  
FOR LIGHT POINTS



SWITCHES / SOCKET  
ISI MARKED SWITCHES  
& SOCKETS

## STRUCTURE



EARTHQUAKE RESISTANT  
RCC FRAMED STRUCTURE  
AS PER SEISMIC ZONE

# BEST BRANDS FOR THE BEST EXPERIENCE

### TILES



### SWITCHES



### NORTH-WEST SANITARY FITTINGS



### PAINTS



### WOODEN DOORS



### KITCHEN SINK



### DOOR LOCKS & HANDLES



### WIRES & CABLES



### GLASS



### UPVC DOORS & WINDOW PROFILES



### CP BATH FITTINGS



### LIFTS



### PLUMBING PIPES



### LIGHTING



Note : Flooring in mix design of marble, granite and tile. Accordingly, variations in shade and/ or size and/or colour and/or design of the tiles, motifs, mica etc. may occur.

Visitors are presumed to have read, understood and agreed to terms and conditions of this brochure. Signature Global can alter or revoke any terms or conditions of this brochure without notice. We/the promoter reserves the right to change, alter, add or delete any of the specifications mentioned herein without prior permission or notice subject however to the applicable laws. The amenities, specifications, facilities, surrounding infrastructure, stock images and features shown and/or mentioned and the image renders used herein are purely indicative and for representational purposes and may differ from the actuals. Photographs of interiors, surroundings or location are digitally enhanced unless otherwise mentioned. Not all photos may have been shot at site. Products, features, light fittings, pictures, images, etc. shown as illustrations are for reference only. The colours, shades of walls, tiles etc. shown in the images are for the purpose of representation only and may vary upon actual construction. All images, the interiors and furniture items displayed therein are to give a perspective to the customer and are not part of the flat to be sold to the customer. This is only an invitation to offer and does not constitute an offer. The purpose of this brochure /booklet /prospectus /advertisement /website is, to indicate to the customers the extent of the amenities and facility that may come up in the project as per the present approved layout. Any prospective sale shall strictly be governed by the terms and conditions of the agreement for sale to be entered into between the parties. In a project where we are mere development managers, the respective developer/promoter of such project is solely liable and responsible for, inter alia, the construction, title and procuring approvals from competent authorities for such project.

All products, names, logos, brands, trademarks are properties of their respective owners. Product of other companies may also be used. However, priority will be given to the aforesaid brands/companies.